



JOHN PSARRAS
S&P CHARTERING



IN PIRAEUS SINCE 1981

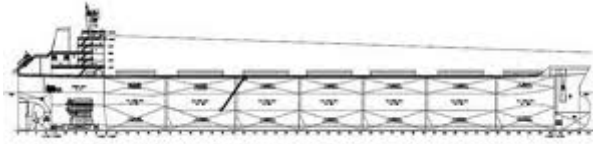
Ph:+30 210 4123696 4133931 4115482 Fx:+30 210 4170618
E'Mail: psarras@psarrasj.gr Website:www.psarrasj.gr
(Members of Hellenic Shipbrokers Association - 1984)

BI-MONTH REPORT

MID MARCH 2016

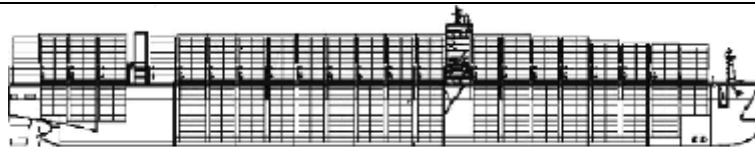
The scope of this report is to assist our clients and friends with a quick glance every about 15 days to get a feeling of the market by reading the more interesting sales in view of higher or lower prices of the main vessels types as well as the demolition prevailing prices.





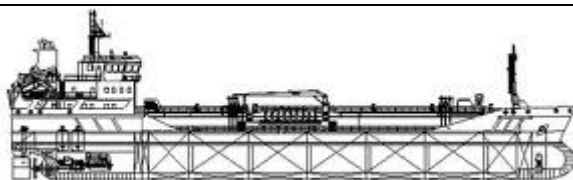
BULK CARRIERS

| NAME | DWT | Y.O.B | P.O.B | PRICE |
|---|--------|----------------------|---------|---|
| AQUACARO | 180600 | 2016 | JAPAN | 32,8 MIL USD TO SINGAPOREANS |
| TENSHIN MARU | 82687 | 2008 | CHINA | 7.9 MIL USD TO GREEKS |
| JI MAY | 75900 | 2001 | JAPAN | 3,8 MIL USD TO UNDISCLOSED |
| IWAGI 395 (TBN RED DAISY) | 61000 | 2016 | JAPAN | 18,5 MIL USD TO UNDISCLOSED |
| CHANG CHENG GUO XING CHANG CHENG GUO RONG CHANG CHENG GUO ROI | 57100 | 2010 2010 2011 | CHINA | EN BLOC 21,1 MIL USD TO CHINESE VIA AUCTION |
| SECRET SHARP | 55400 | 2013 | VIETNAM | EN BLOC 16,5 MIL USD TO GEEKS |
| VOC DAISY | 47183 | 1998 | JAPAN | 2,2 MIL USD TO UNDISCLOSED |
| CS CHARA | 30634 | 2006 | INDIA | 3,6 MIL USD TO GREEKS |
| DORIS | 28352 | 2008 | JAPAN | 6,3 MIL USD TO GREEKS |



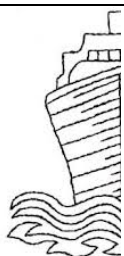
CONTAINER SHIPS

| NAME | DWT | TEU | Y.O.B. | P.O.B | PRICE |
|---------------|-------|------|--------|-------|----------------------------|
| SAN NICOLAS | 5099 | 518 | 2000 | CHINA | 1,6 MIL USD TO UNDISCLOSED |
| OSAKA TRADER | 24376 | 1613 | 1996 | JAPAN | 2,7 MIL USD TO UNDISCLOSED |
| CALA PAGURO | 21442 | 1577 | 2007 | JAPAN | 10 MIL USD TO UNDISCLOSED |
| NORDIC WISMAR | 46131 | 3421 | 2011 | CHINA | 20 MIL USD TO NORWEGIANS |



TANKERS

| NAME | DWT | HULL | Y.O.B | P.O.B. | PRICE |
|----------------|--------|------|-------|---------|---------------------------------|
| PACIFIC LONDON | 113334 | DH | 1999 | S.KOREA | 15 MIL USD TO INDONESIA NS |
| TRIDENT STAR | 106000 | DH | 2005 | JAPAN | 26 MIL USD TO THAI BASED BUYERS |
| KASSOS | 95420 | DH | 1995 | S.KOREA | 8,3 MIL USD TO INDIANS |
| SEARAMBLER | 39551 | DH | 2001 | S.KOREA | 11 MIL USD TO UNDISCLOSED |
| ARTHUR | 19084 | DH | 1987 | JAPAN | 3,2 MIL USD TO UNDISCLOSED |



DEMOLITION



BANGLADESH

| NAME | LDT | DWT | Y.O.B | P.O.B. | PRICE |
|-------------|-------|--------|-------|---------|-----------------|
| QUORN | 22586 | 179869 | 1996 | JAPAN | 246 USD PER LDT |
| PORT MUMBAI | 3240 | 7920 | 1983 | GERMANY | 230 USD PER LDT |



| NAME | LDT | DWT | Y.O.B | P.O.B. | PRICE |
|-----------|------|-------|-------|--------|-----------------|
| SEA GLORY | 7442 | 27279 | 1997 | | 130 USD PER LDT |



| NAME | LDT | DWT | Y.O.B | P.O.B. | PRICE |
|------------|-------|-------|-------|--------|-------------------|
| THE OPENER | 12126 | 70029 | 1994 | CHINA | 239,5 USD PER LDT |



| NAME | LDT | DWT | Y.O.B | P.O.B. | PRICE |
|-------------------|-------|-------|-------|---------|-----------------|
| FLORA | 5618 | 26587 | 1985 | JAPAN | 230 USD PER LDT |
| FORTUNE NAVIGATOR | 4246 | 8515 | 1998 | JAPAN | 245 USD PER LDT |
| ARNOLD SCHULTE | 13900 | 41000 | 2002 | S.KOREA | 270 USD PER LDT |

Disclaimer

All information stated in this report has been collected from a variety of maritime sources and is presented in good faith and without any guarantee from our part .

J. PSARRAS S+P CHARTERING, shall not accept any responsibility for any errors and/or omissions arising from this report and cannot be held responsible for any action taken and/or losses occurred as a result of the details included in this report.

Recirculation of same is not permitted without the written agreement of the aforementioned company, which is the only entitled one to produce copies of same.